



# An Excellent Choice in Cooling, Comfort and Convenience



## 2023-24 PRODUCT CATALOG

PACKAGED TERMINAL AIR CONDITIONER (PTAC / PTHP)



**PTAC UNITS.CA**  
by Mid City Air Since 1978

**1-888-MID-CITY (643-2489)**

# FEATURES

Designed for Comfort and Convenience



## PACKAGED TERMINAL AIR CONDITIONER

For more than 25 years, Midea has been developing air conditioning systems focused on comfort, quality, efficiency and reliability — all with affordable pricing. With a strong focus on customer satisfaction and environmental responsibility, we are committed to bringing the highest quality products to commercial and residential establishments seeking comfort solutions that provide lasting value.

### Auto Restart

If a power failure occurs, the unit will automatically return to normal operation when power resumes.

### Washable Slide-Out Filters

Allows for easy cleaning, ensuring maximum operating efficiency.

### Electronic Controls

Temperature, fan speed and mode operation are easily adjusted with the touch of a button. Easy-to-read digital display shows set temperature.

### Super Silent Operation

Dual Motor design with indoor crossflow blower and high efficiency compressor. Sturdy chassis construction dampens vibration and sound transmission.

### Auto Defrosting

Prevents evaporator from freezing, prolonging product life and improving energy savings.

### Fresh Air Ventilation

Fills the room with fresh air when operating, providing healthier and more comfortable air quality.

### Auxiliary Mode Selection

Allows for more functional detail, and better temperature control. Customize many operational parameters of the unit.

### Power Cord

Pre-assembled power cord from factory.

### RECEPTACLES AND FUSE TYPES

Voltage	230V			265V	
	15	20	30	15	20
Heater Size (kW)	2.5	3.5	5.0	3.5	
Receptacles					
NEMA # Receptacle	6-15R	6-20R	6-30R	7-20R	
NEMA # Plug	6-15P	6-20P	6-30P	7-20P	



2 YEAR Limited Warranty from Original Purchase Date



5 YEAR Limited System Warranty from Original Purchase Date

# PTAC / PTHP


Packaged Terminal Air Conditioner  
Specifications



PTACUNITS.CA



# SPECIFICATIONS

Cool/Heat		2023 PTAC Specifications	
Sale model		MWIUP-09AEN8-ML8	
Power supply		208_230V_1Ph,FREQUENCY_60HZ	
<b>Cooling (Standard conditions)</b>			
Capacity	Btu/h	9200/9100	
Input	W	720/710	
Current	A	3.7/4.0	
EER	Btu/h/W	12.8	
Standby power	W	/	
<b>Heating (PTC)</b>			
Capacity	Btu/h	10900/8900	
Input(Heater)	W	3500/2897	
Current	A	15.3/13.7	
<b>Heating (Heat pump models)</b>			
Capacity	Btu/h	7800/7500	
Input	W	600/580	
Current	A	3.4/3.6	
COP	W/W	3.80	
Starting current	A	45.9	
Indoor air flow (Hi/Mi/Lo)	m3/h	721/0/582	
	1 m3/h = 0.588 ft3/min	ft3/min	424.12///342.35
Indoor noise level (Hi/Mi/Lo)		dB(A)	52.5/0/52
Outdoor side noise level (Hi)		dB(A)	67.5
Refrigerant type			R32
		kg	0.64
	1kg=35.274oz	oz	22.58
Design pressure (L/H)	145psi=1MPa	psi	300/580
Connection wiring			12#x3
Plug type			LCDI (6-20P)
			
Control type		Electronic Control	
Operation temp	indoor (cooling/heating)	°C	17-32/0-27
		°F(=°C*1.8+32)	///
	outdoor (cooling/heating)	°C	18-43/-5-24
		°F(=°C*1.8+32)	///
Dimension(W*D*H)		mm	1067x532x406
		in	42.01x20.94x15.98
Packing (W*D*H)		mm	1130x625x490
		in	44.49x24.61x19.29
Net/Gross weight		kg	47.5/51.5
		lb	104.72/113.54
Loading quantity 20' /40' /40'HQ		Pieces	72/152/190

Model Number Nomenclature:

MP - Midea PTAC

07/09/12/15 - Capacity (Nearest 1000 BTU)

E/H - Electric Heat / Heat Pump

M - Reserved for future use


A/B/C - 2.5 kW / 3.5kW / 5kW heater capacity

8 - Model version

2 - 230/208V, 60Hz, 1Ph

Specifications subject to change without notice.

# SPECIFICATIONS


Cool/Heat		2023 PTAC Specifications	
Sale model		MWIUP-12AEN8-MK6	
Power supply		208_230V_1Ph,FREQUENCY_60HZ	
<b>Cooling (Standard conditions)</b>			
Capacity	Btu/h	12000/11800	
Input	W	1030/1010	
Current	A	5.2/5.6	
EER	Btu/h/W	11.6	
Standby power	W	/	
<b>Heating (PTC)</b>			
Capacity	Btu/h	10900/8900	
Input(Heater)	W	3500/2897	
Current	A	15.3/13.7	
<b>Heating (Heat pump models)</b>			
Capacity	Btu/h	10800/10500	
Input	W	880/840	
Current	A	4.8/5.1	
COP	W/W	3.40	
Starting current	A	45.9	
Indoor air flow (Hi/Mi/Lo)	m3/h	740/0/600	
	1 m3/h = 0.588 ft3/min	ft3/min	435.29///352.94
Indoor noise level (Hi/Mi/Lo)		dB(A)	51/0/50.5
Outdoor side noise level (Hi)		dB(A)	67.5
Refrigerant type			R32
		kg	0.76
	1kg=35.274oz	oz	26.80824
Design pressure (L/H)	145psi=1MPa	psi	300/580
Connection wiring			12#x3
Plug type			LCDI (6-20P)
			
Control type		Electronic Control	
Operation temp	indoor (cooling/heating)	°C	17-32/0-27
		°F(=°C*1.8+32)	///
	outdoor (cooling/heating)	°C	18-43/-5-24
		°F(=°C*1.8+32)	///
Dimension(W*D*H)		mm	1067x532x406
		in	42.01x20.94x15.98
Packing (W*D*H)		mm	1130x625x490
		in	44.49x24.61x19.29
Net/Gross weight		kg	50/54
		lb	110.23/119.05
Loading quantity 20' /40' /40'HQ		Pieces	72/152/190

Model Number Nomenclature:  
 MP - Midea PTAC  
 07/09/12/15 - Capacity (Nearest 1000 BTU)  
 E/H - Electric Heat / Heat Pump  
 M - Reserved for future use

A/B/C - 2.5 kW / 3.5kW / 5kW heater capacity  
 8 - Model version  
 2 - 230/208V, 60Hz, 1Ph

Specifications subject to change without notice.

# SPECIFICATIONS

Cool/Heat		2023 PTAC Specifications	
Sale model		MWIUP-15AEN8-MJ6	
Power supply		208_230V_1Ph,FREQUENCY_60HZ	
<b>Cooling (Standard conditions)</b>			
Capacity	Btu/h	14700/14500	
Input	W	1390/1370	
Current	A	6.5/7.4	
EER	Btu/h/W	10.6	
Standby power	W	/	
<b>Heating (PTC)</b>			
Capacity	Btu/h	10900/8900	
Input(Heater)	W	3500/2897	
Current	A	15.3/13.7	
<b>Heating (Heat pump models)</b>			
Capacity	Btu/h	13500/13200	
Input	W	1170/1120	
Current	A	6.0/6.4	
COP	W/W	3.20	
Starting current	A	45.9	
Indoor air flow (Hi/Mi/Lo)	m3/h	708/0/561	
	1 m3/h = 0.588 ft3/min	ft3/min	416.47///330.00
Indoor noise level (Hi/Mi/Lo)		dB(A)	53/0/52.5
Outdoor side noise level (Hi)		dB(A)	67
Refrigerant type			R32
		kg	0.9
	1kg=35.274oz	oz	31.7466
Design pressure (L/H)	145psi=1MPa	psi	300/580
Connection wiring			12#x3
Plug type			LCDI (6-20P)
			
Control type		Electronic Control	
Operation temp	indoor (cooling/heating)	°C	17-32/0-27
		°F(=°C*1.8+32)	///
	outdoor (cooling/heating)	°C	18-43/-5-24
		°F(=°C*1.8+32)	///
Dimension(W*D*H)		mm	1067x532x406
		in	42.01x20.94x15.98
Packing (W*D*H)		mm	1130x625x490
		in	44.49x24.61x19.29
Net/Gross weight		kg	51.5/55.5
		lb	113.54/122.36
Loading quantity 20' /40' /40'HQ		Pieces	72/152/190

Model Number Nomenclature:  
 MP - Midea PTAC  
 07/09/12/15 - Capacity (Nearest 1000 BTU)  
 E/H - Electric Heat / Heat Pump  
 M - Reserved for future use

A/B/C - 2.5 kW / 3.5kW / 5kW heater  
 capacity  
 8 - Model version  
 2 - 230/208V, 60Hz, 1Ph

Specifications subject to change without notice.



# PTAC / PTHP

## Packaged Terminal Air Conditioner Accessories



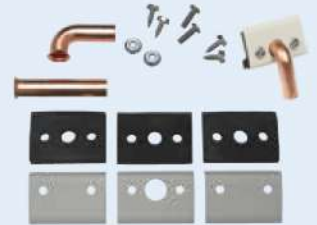
Stamped Aluminum Grille MAGS01



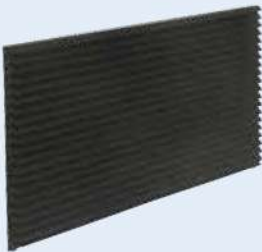
Standard Wall Sleeve MAWS01



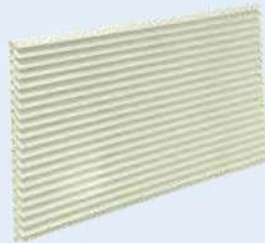
Foldable Wall Sleeve MAWF01



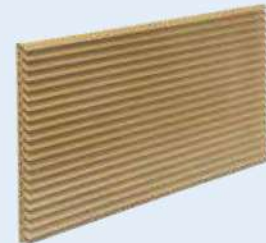
Condensate Drain Kit MADS01



PTAC Aluminum Architectural Grille MAGA01 - Dark Bronze



PTAC Aluminum Architectural Grille MAGA02 - White



PTAC Aluminum Architectural Grille MAGA03 - Beige



Subbase-A  
(Non-electrical Base)



Subbase-230V-1  
5A  
Subbase-230V-2  
0A  
Subbase-230V-3  
0A  
Subbase-265V-15  
A  
Subbase-265V-2  
0A



Filter  
17122300001094



Verdant Energy Management  
Thermostat VATE01 - Wired (HP or  
AC)  
VATE02 - Wireless (HP or AC)



Standard Wired Wall  
Thermostat MATS01 (HP or  
AC)

(Several 24v aftermarket alternatives available)

Save up to 20% on energy costs  
without compromising guest  
comfort.  
Eligible for rebates in most states.



MID CITY AIR CONDITIONER INC.

Canada Office

37 Jeanne-Mance  
Montreal, QC, H2V 4L1  
Phone: (514) 273-2489  
Email: sales@ptacunits.ca

US Office

580 Fifth Avenue #909  
New York, NY, 10036, USA  
Phone: 1-888-643-2489 (MID-CITY)  
Email: sales@ptacunits.ca

**PTAC UNITS.CA**  
by Mid City Air Since 1978

**1-888-MID-CITY (643-2489)**